


SouthernHill & Circle Infra Partners present

The next step in connectivity

Working together towards a stable
and future-ready connection





Moving Connectivity Forward



You probably do not think about your connectivity every day. You arrive at the office, start your laptop and begin your workday. Everything simply works as expected. That is exactly why a change in this area may feel unexpected.

Still, something is about to change in the way connectivity is organised at Chemelot.

In this brochure, we guide you step by step through what is changing and what that means for your organisation. Not to make things complicated, but to provide clarity and perspective. So you understand what is happening, what is expected of you and how you can make the right decision for your situation at the right time.



1.

The situation is about to change

Many organisations at Chemelot currently use a connectivity environment that has evolved over the years. In this model, fibre infrastructure, internet access and often hardware and management are managed within one integrated solution. This environment will change in the coming period.

This means the current way of working will not continue in its present form. Existing contracts are coming to an end and the services you use today are being reorganised. As the transition progresses, you will decide how your organisation will remain connected to the Chemelot network and the internet in the future.

On the surface, little will change. You arrive at the office, open your laptop and everything works as usual. Connections with factories and the outside world will continue without interruption. Behind the scenes, the structure is being adjusted and optimised. Connectivity will be organised differently, with more room for customisation and a fairer distribution of costs.

This transition will take place step by step. You will have time to gain insight into the changes and make a choice that fits your organisation. Your current setup is coming to an end, but you will not have to navigate the next step on your own.



Background of this change

In the past, connectivity services were organised by Sitech through a shared services model. Within this model, both the fibre infrastructure and the services were managed by a single party. After the split of Sitech, the services temporarily continued under the name PITS within Ebert Hera, while the fibre infrastructure remained with Circle Infra Partners.

This setup did not always align with the different needs of organisations. In addition, an uneven cost distribution emerged, where some organisations incurred little or no costs, while others carried a larger share of the burden. The new setup is intended to create a more balanced and suitable approach.



2.

What this means for your organisation

You are currently using the connectivity services at Chemelot. By now, this has most likely become second nature to you. The connection works, your operations continue and in practice it rarely requires your attention. That is exactly why it is important to know that this situation is changing.

Even if IT is not a daily focus within your organisation, this development directly impacts your business operations. Without a suitable setup, your organisation will not remain connected in the same way.

A new setup, the same trusted reliability.

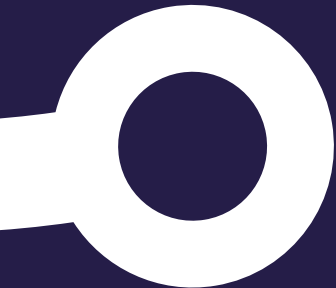
The coming period is intended to give you a clear understanding of what is changing, what it means for your situation and which option best fits your needs. You will have the opportunity to review everything step by step and make a decision that matches the way your organisation operates.



3.

How responsibilities are divided

In the new situation, infrastructure and services will be organised more clearly as separate responsibilities.



This collaboration forms the foundation of the transition project



Circle Infra Partners

Circle Infra Partners remains responsible for the fibre infrastructure at the Chemelot site. They ensure that the physical connections remain available and continue to operate as expected.



SouthernHill

SouthernHill has been selected as the organisation that will provide the connectivity services. This includes internet access, network services and – if desired – the management of the associated hardware and environment.

This division of roles creates greater clarity around responsibilities. It also makes it easier to align the services with the needs of your organisation.

For you, this means working within a renewed structure where we look together, step by step, at what best fits your situation and specific requirements.



4.

Meet the team

Behind this new collaboration is a team working towards one goal: ensuring your transition runs smoothly and your organisation remains properly connected. Not separate parties, but one team that works together closely and maintains full oversight of the entire environment.

During the coming period, you will work closely with this team. We will support you, answer your questions and guide you step by step throughout the process.



Serge Stijnen
CEO SouthernHill



Erik Hulst
Presales Consultant
SouthernHill



Gaston Bougie
Senior Network
Engineer SouthernHill



Wim Klinkers
Senior Project
Manager SouthernHill



Eric Coumans
Marketing &
Communication
Manager SouthernHill



Arnold Krijgsman
Director Project
Management Office
Circle Infra Partners

Visit our website for more information:

<https://chemelot.southernhill.nl/en/>



5.

Choose certainty. Choose one central point of control...

In the coming period, there will be a moment when you decide how your organisation will remain connected. From our experience, many organisations prefer working with a single party that oversees the complete picture. Not only for the technology itself, but especially for the clarity and peace of mind that comes with it.

When connectivity, hardware and management are brought together in one place, communication becomes simpler and responsibilities become clearer. You have a single point of contact and do not need to coordinate between different suppliers or parties whenever something arises.

For most organisations, that is ultimately what matters most: that the connection works, processes continue and employees can keep working without disruption. Just as it feels today, you expect everything to simply work.

That is why we work with you towards a setup in which continuity, management and support are managed centrally. Within the collaboration between Circle Infra Partners and SouthernHill, we guide you step by step, so you do not have to oversee all technical and organisational aspects yourself.

At the same time, it is important to understand that the current situation will not continue indefinitely. Eventually, a new setup will be required to remain connected. We understand that decisions like this take time. That is why we guide you throughout the entire process, helping you understand what is changing, what it means for your organisation and which solution best fits your needs.






6.

The transition process

The transition to the new situation will not happen overnight. In the coming months, you will go through several clear steps together with us as part of the transition project. We will guide you through this process, from the first information and orientation phase to making a decision and setting up your new connectivity.

To keep the process clear and easy to follow, an overview is included alongside this section. It gives you a clear understanding of what to expect, when action will be required from you and how you will be guided step by step towards a new and fully operational environment.





Start

Discovery & Continuity

In this phase, we map out your current situation. We review your current connection, usage and requirements. You will gain insight into what is changing and which areas require attention, so you can move into the next step well prepared.

After that, we will provide the necessary information and explain the available options. You will gain a clear understanding of the choices available to you and what they mean for your organisation, helping you determine which direction best fits your situation.

It is important to know that the continuity of the connectivity services will be guaranteed throughout the entire process.

Phase 2

Service Transition

In this phase, the chosen solution will be configured and migrated. We ensure a controlled transition from the current to the new situation, with a strong focus on continuity and minimal disruption to your daily operations.

Phase 3

Stabilisation

After the transition, the focus shifts to keeping the new setup stable and reliable. We monitor the environment, resolve any remaining issues and ensure everything functions as agreed, allowing you to continue working without disruption.

7.

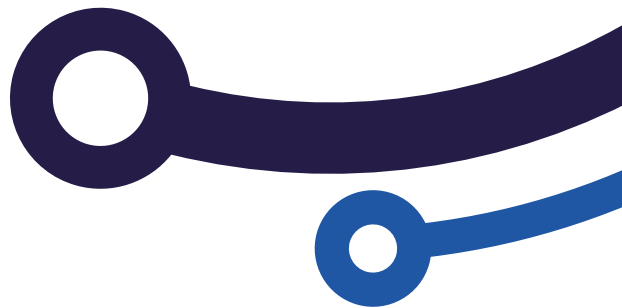
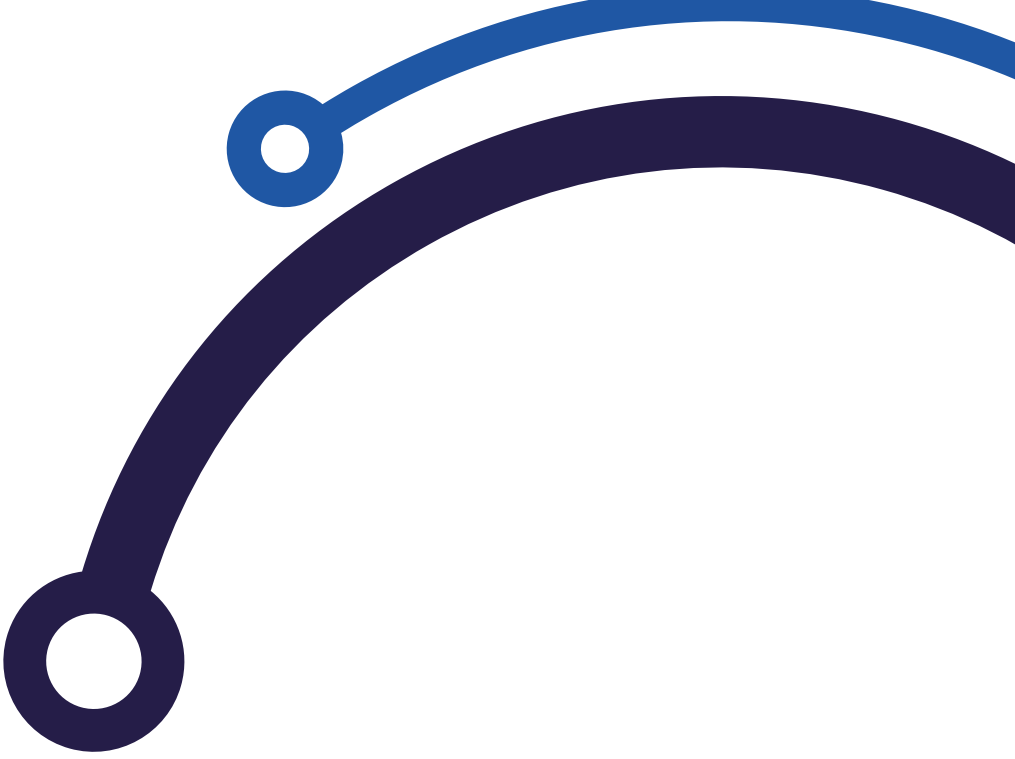
A solution that fits your organisation

In the coming period, you will be facing an important decision. We understand that this may feel like an additional responsibility while your daily business continues as usual. That is exactly why we guide you step by step, so you do not have to figure everything out yourself and can make decisions with confidence.

From our experience, organisations benefit most from a solution in which everything is managed through one central approach. Not because it is required, but because in practice it creates peace of mind, clarity and continuity. You have one point of contact, one party with full oversight and a setup that fits the way your organisation operates.

At the same time, we are looking ahead to the future. How will your organisation remain well connected today and in the years ahead? How do you prevent dependencies, loose ends or unclear responsibilities?

During the transition project, we guide you through each step of the process. Not by pushing you towards a quick decision, but by working together to determine what works best for you. The goal is not simply to choose a solution, but to create a situation that feels right and that you can rely on.



**Moving
Connectivity
Forward**



8.

More information and contact

**Would you like to learn more or do you have
questions after reading this brochure?**


We are happy to help. You can contact us via:

✉ chemelot@southernhill.nl

🌐 <https://chemelot.southernhill.nl/en/>

☎ +31 (0)88 050 1601

Our team is ready to support and guide you through the steps ahead. Together, we will ensure a smooth transition and a solution that fits your organisation.



This brochure is provided to you by Circle
Infra Partners and SouthernHill. For more
information, please contact us directly:

E-mail: chemelot@southernhill.nl

Phone: +31 (0)88 050 1601

